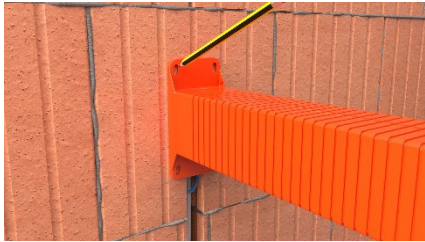
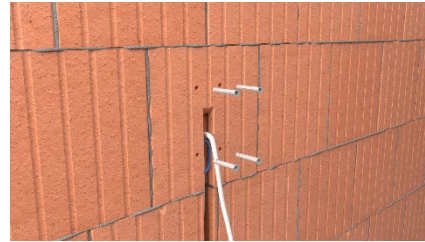


## Montageanleitung

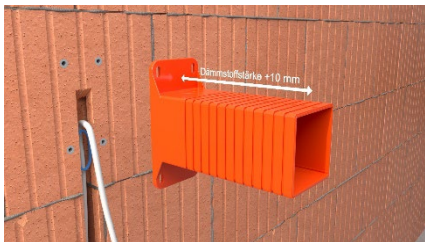
### P401 WDVS-Geräteträger 160 x 140 mm



Grundträger vertikal an der Wand positionieren und Bohrlöcher anzeichnen.



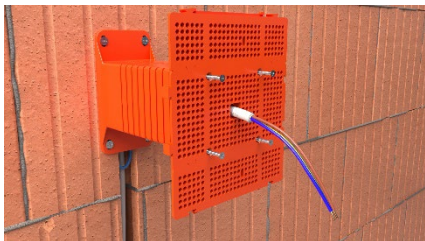
Markierte Bohrungspunkte ausbohren und die mitgelieferten 8 mm Universaldübel einsetzen.



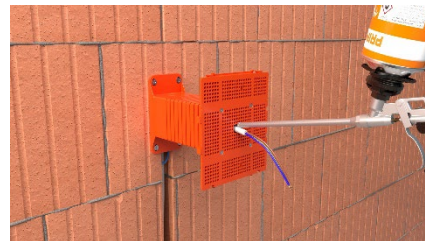
Grundträger auf die geplante Dämmstoffstärke kürzen und zusätzlich 10 mm für die Klebe- und Armierungsschicht einplanen.



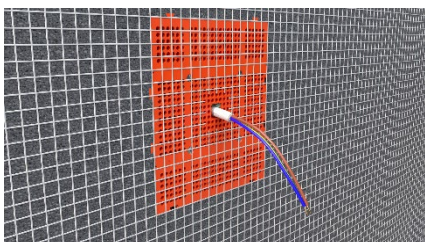
Gekürzten Grundträger mithilfe der mitgelieferten Schrauben vertikal an der Wand befestigen.



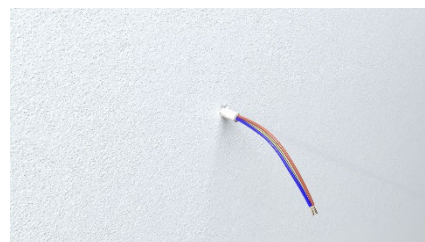
Montageplatte aufsetzen und mithilfe der mitgelieferten Schrauben befestigen.



Hohlraum mit PRIMO Thermoschaum ausschäumen, um Kältebrücken zu vermeiden.



Dämmung einbringen, Gewebe aufbringen und...

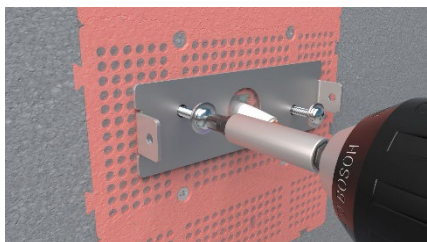


... die Wand verputzen.

## Montageanleitung

---

### P401 WDVS-Geräteträger 160 x 140 mm



Das gewünschte Gerät kann direkt an der Montageplatte befestigt werden.



Geeignet zur direkten Montage von Leuchten...



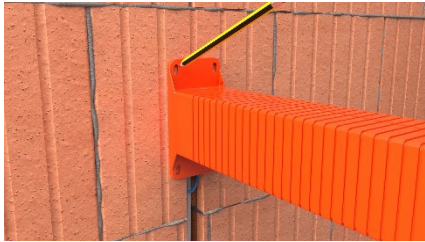
...Kameras und...



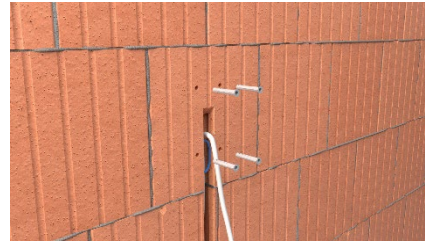
...Sensoren in wärmegeämmten Fassaden.

## Assembly instruction

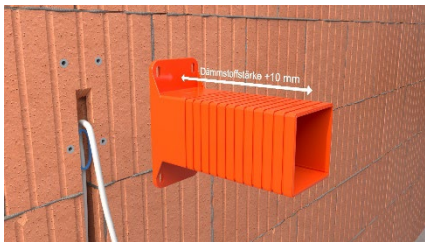
### P401 Thermal insulation-device support 160 x 140 mm



Position the base bracket vertically on the wall and mark the drill holes.



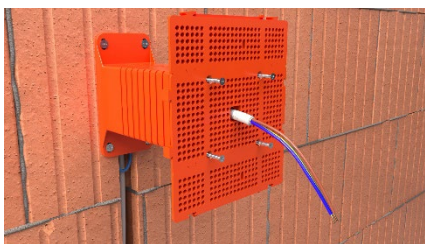
Drill out the marked drilling points and insert the supplied 8 mm universal dowels.



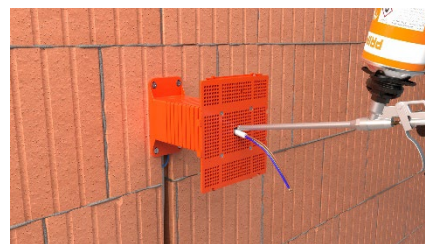
Cut the base support to the planned insulation thickness and allow an additional 10 mm for the adhesive and reinforcement layer.



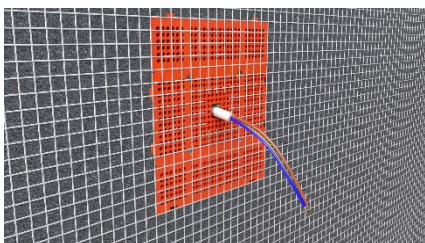
Attach the shortened base bracket vertically to the wall using the screws provided.



Place the mounting plate on top and secure it using the screws provided.



Fill the cavity with PRIMO thermal foam to prevent cold bridges.



Insert insulation, apply fabric, and...

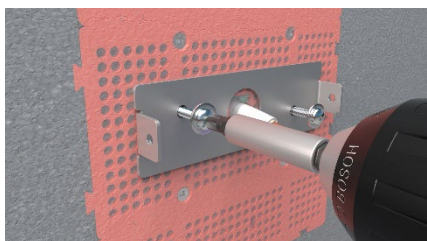


... plaster the wall.

## Assembly instruction

---

P401 Thermal insulation-device support 160 x 140 mm



The desired device can be attached directly to the mounting plate.



Suitable for direct mounting of luminaires...



...cameras and...



Sensors in thermally insulated facades.