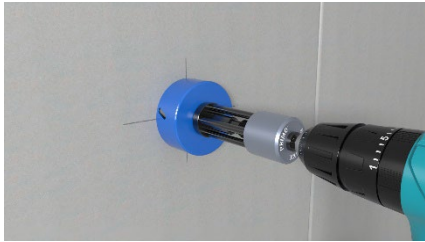
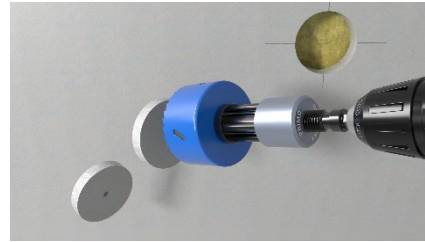


Montageanleitung

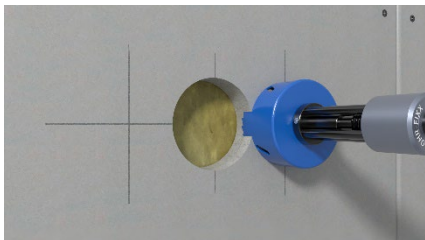
P200-02 Qnect Hohlwand Schallschutzdose 49 mm



Erste Dose anzeichnen und ein 74 mm Bohrloch einbringen.



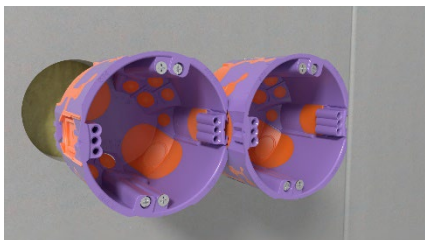
Einfaches Entfernen der Bohrkerne durch Bohr-Fixx (P779).



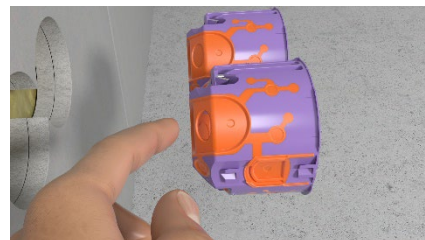
Bei Bedarf weitere Löcher anzeichnen und ausfräsen.



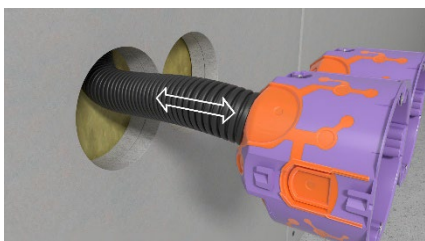
Optional: Weitere Bohrlöcher zeitsparend und messgenau mit der Bohrschablone (P102-74) ausfräsen.



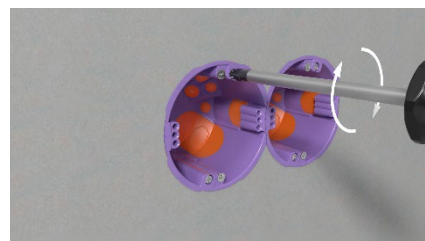
Vor dem Einsetzen, die Dosen durch die stabile SCS-Verbindungstechnik miteinander verbinden.



Rohreinführungen durch Rohr-Plopp öffnen.



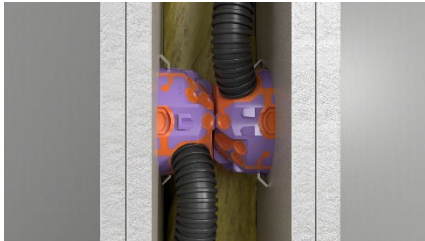
Werkzeuglos das Rohr einführen. Sichere Rohrfixierung durch die Membrantechnik.



Dosen in die Bohrlöcher einsetzen und die Schrauben festziehen.

Montageanleitung

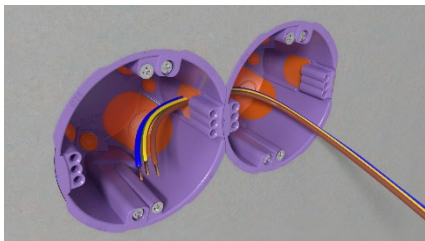
P200-02 Qnect Hohlwand Schallschutzdose 49 mm



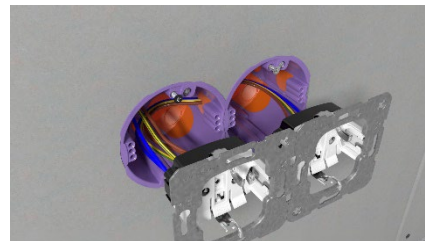
Perfekt geeignet für den Einsatz in engen Wandaufbauten.



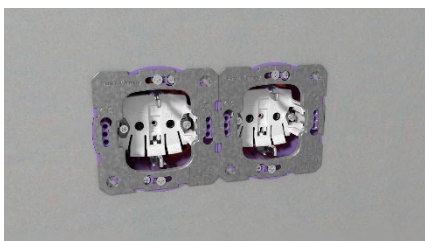
Für Schallschutzwände (100 mm Wandstärke) bis 58 dB, auch bei gegenüberliegendem Einbau der Dosen.



Einfache und zeitsparende Durchverdrahtung dank großflächiger Verbindungsmembran möglich.



Gerät einsetzen und verbinden.



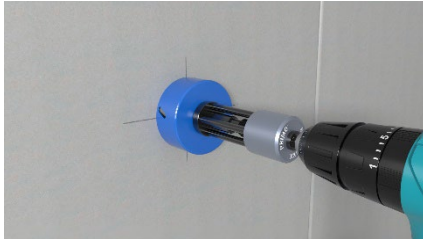
Gerät durch integrierte Schrauben befestigen.



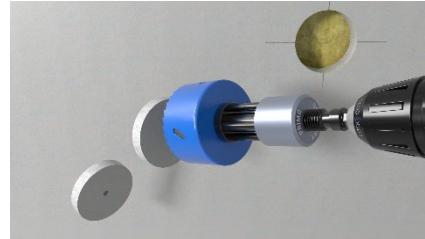
Fertige Installation.

Assembly instruction

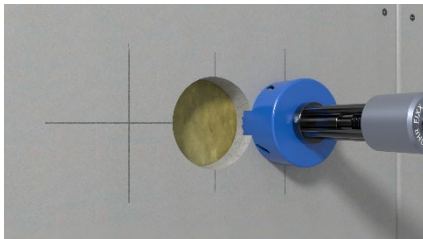
P200-02 Qnect cavity wall sound insulation box 49 mm



Mark the first box and drill a 74 mm drill hole.



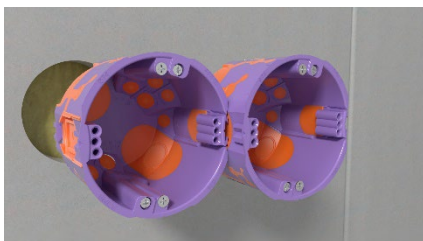
Easy removal of the drill cores with Bohr-Fixx (P779).



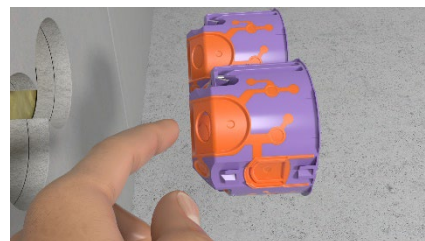
If necessary, mark out further holes and mill out.



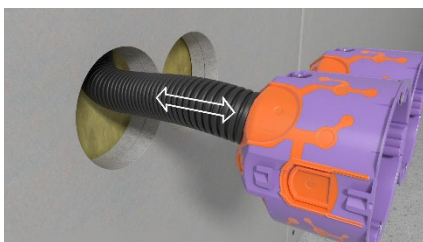
Optional: Mill out additional drill holes with the drilling template (P102-74) to save time and ensure accurate measurements.



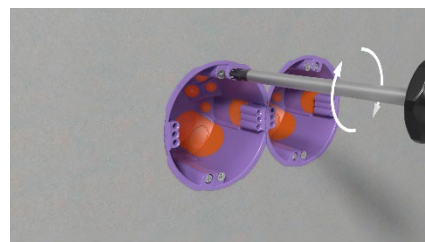
Before inserting, connect the boxes together using the stable SCS connection technology.



Open pipe inlets with a pipe plop.



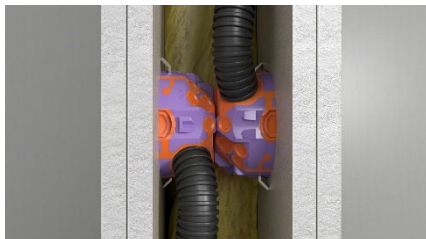
Insert the pipe without tools. Secure pipe fixing thanks to the membrane technology.



Insert the boxes into the drilled holes and tighten the screws.

Assembly instruction

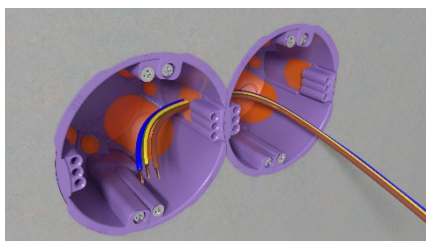
P200-02 Qnect cavity wall sound insulation box 49 mm



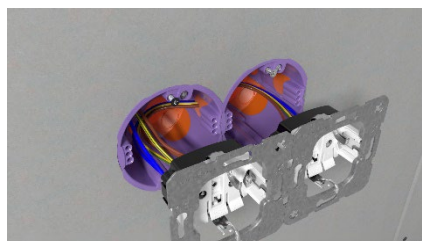
Perfectly suited for use in narrow wall structures.



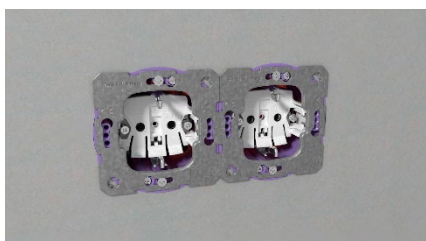
For soundproof walls (100 mm wall thickness) up to 58 dB, even if the boxes are installed opposite each other.



Simple and time-saving through-wiring possible thanks to large-area connection membrane.



Insert and connect the device.



Fasten the device using the integrated screws.



Finished installation.